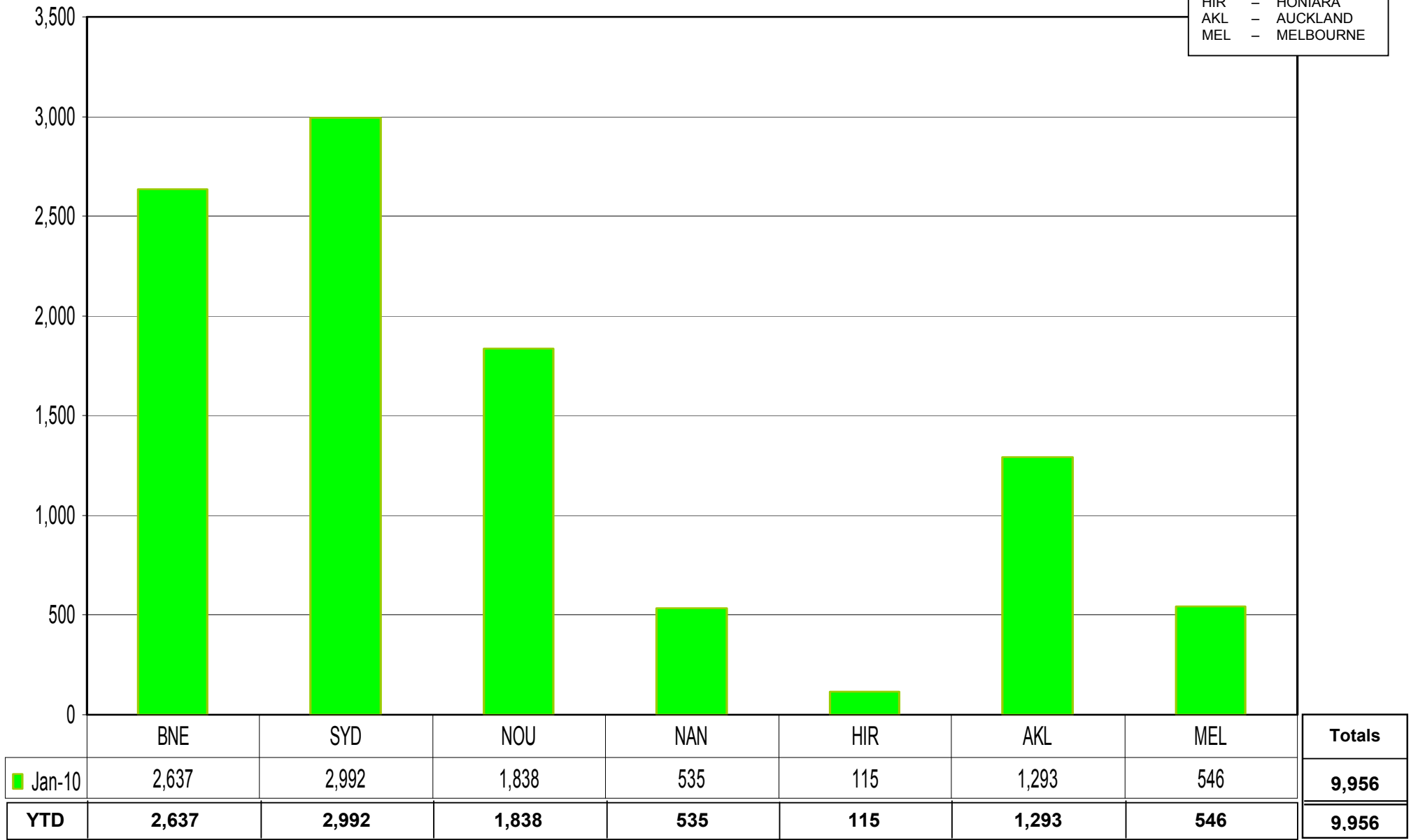


## Total Arrivals from City of Origin January 2010

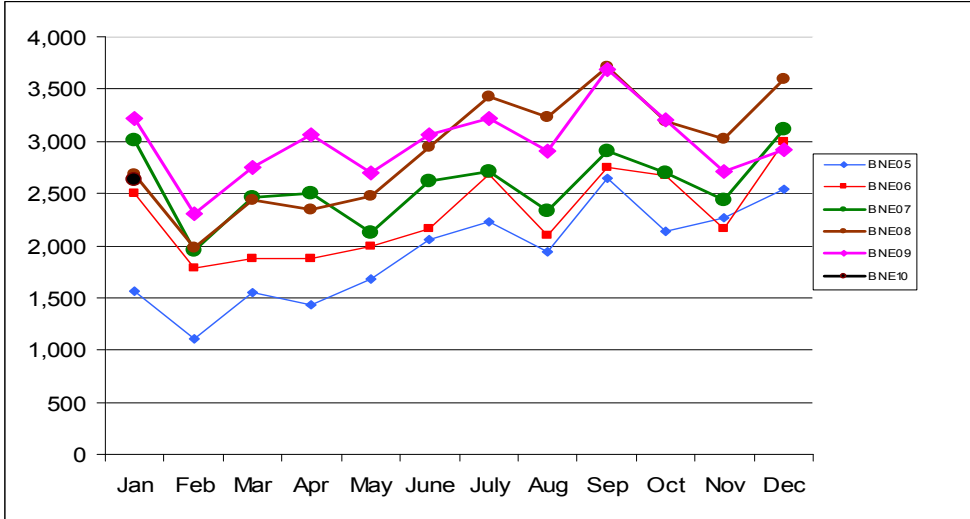
- |     |   |           |
|-----|---|-----------|
| BNE | - | BRISBANE  |
| SYD | - | SYDNEY    |
| NOU | - | NOUMEA    |
| NAN | - | NADI      |
| HIR | - | HONIARA   |
| AKL | - | AUCKLAND  |
| MEL | - | MELBOURNE |



Source: Airports Vanuatu. Data compiled by Vanuatu Hotels ([www.vanuatu-hotels.vu](http://www.vanuatu-hotels.vu))  
Pekoa figures accounted for.

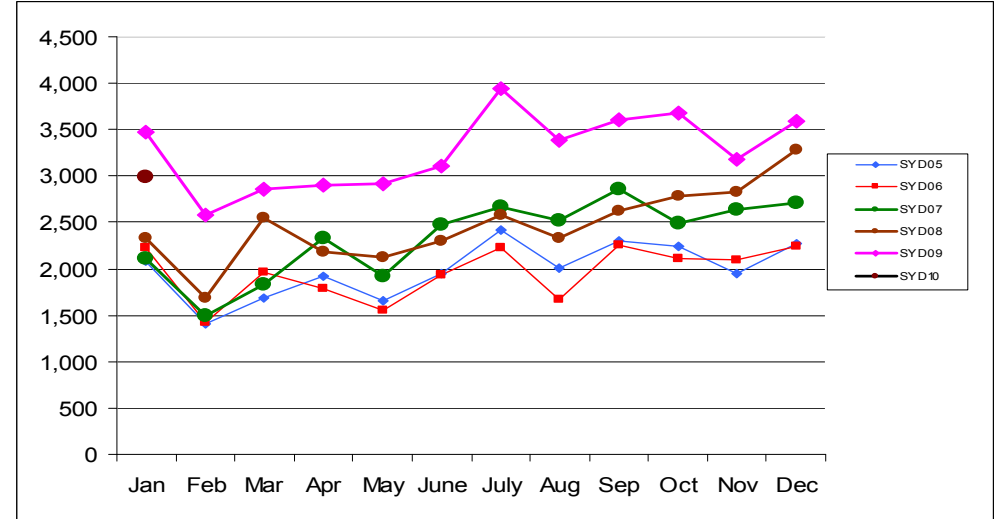
# City of Origin Comparison – January 2009 to January 2010

## BRISBANE



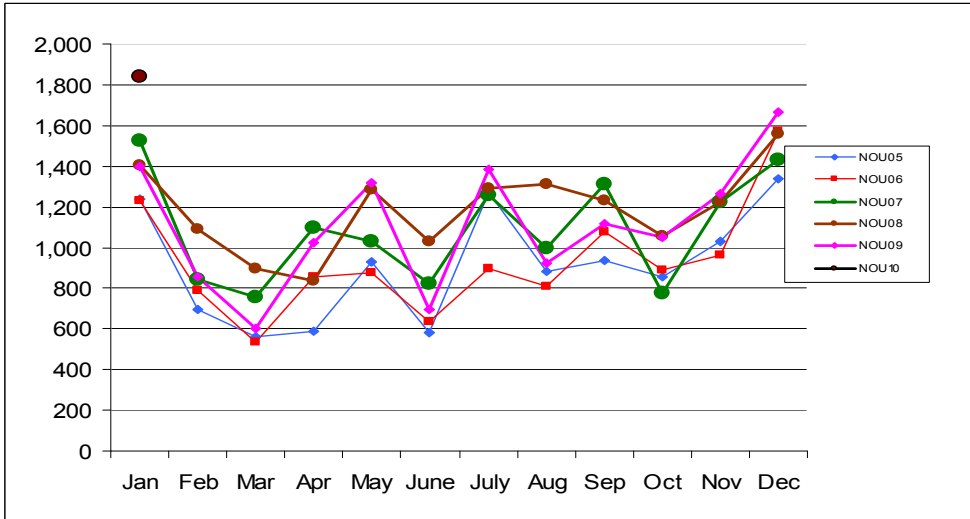
% -18

## SYDNEY



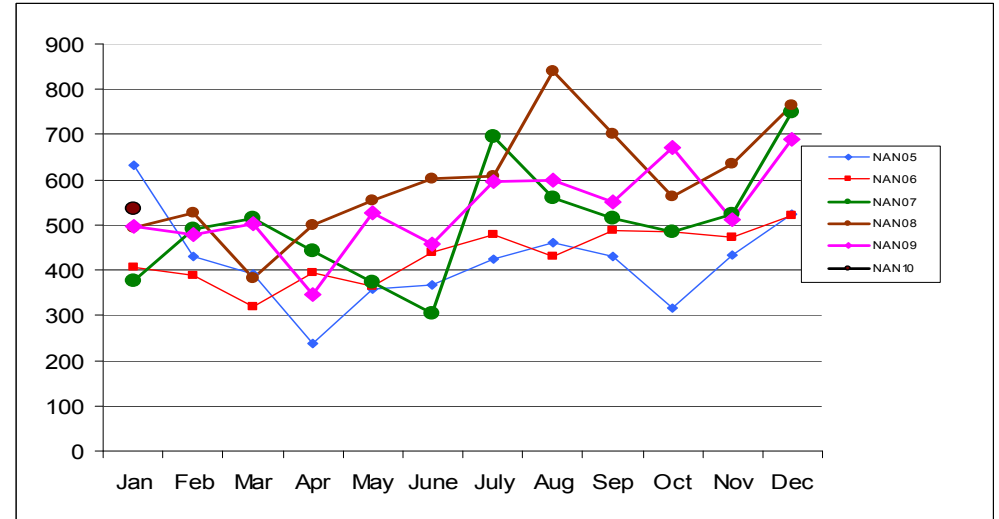
% -14

## NOUMEA



% 31.3

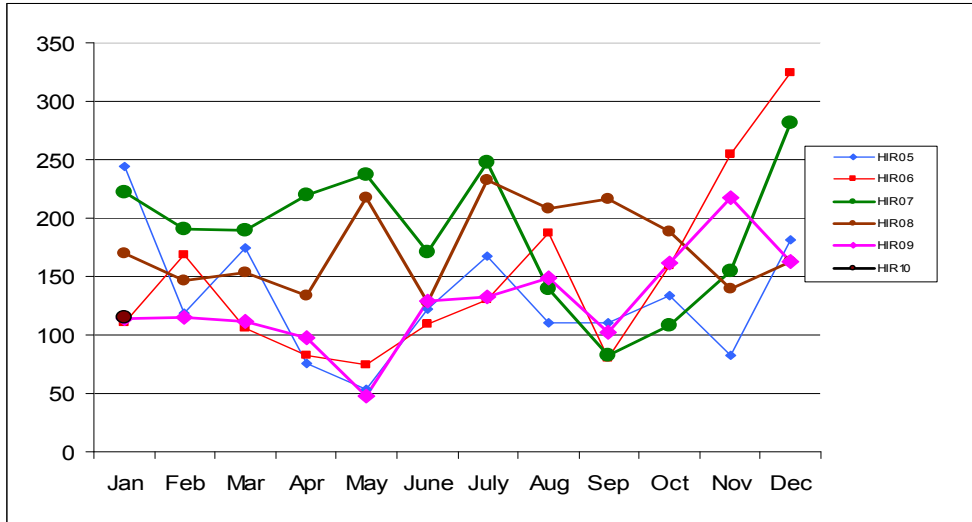
## NADI



% 7.9

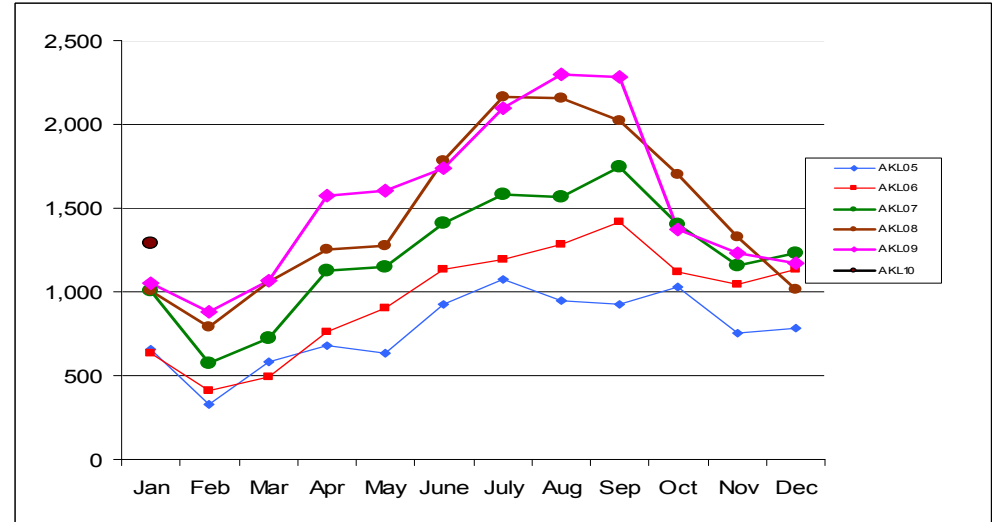
## City of Origin Comparison – January 2009 to January 2010

### HONIARA



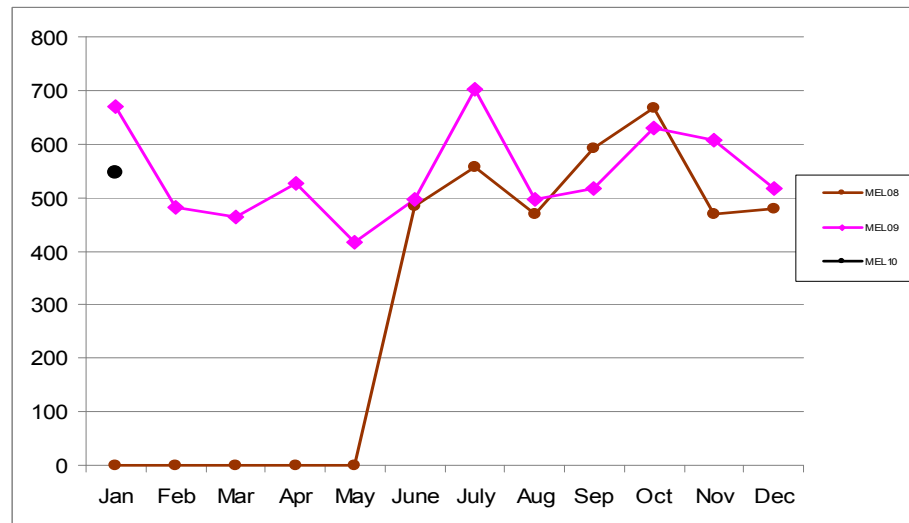
% 0.9

### AUCKLAND

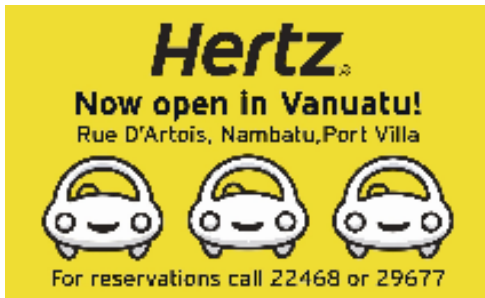


% 23.1

### MELBOURNE

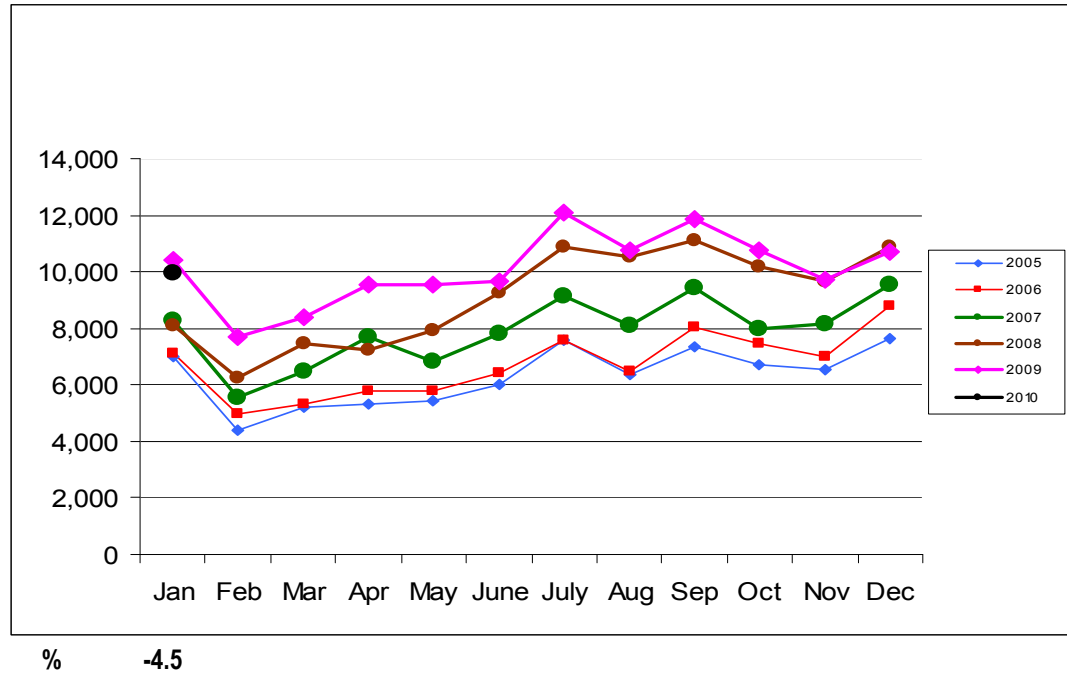


% -18.5




■ Chartered Accountants & Business Advisers  
 ■ Immigration & Investment  
 ■ Business Accounting  
 ■ Audit & Assurance  
 ■ Company Formation & Insurance  
 ■ International Tax & Estate Planning  
 ■ Corporate Reconstruction & Insolvency  
 Tel: (678) 22159 Fax: (678) 22276  
 Email: [pkf@vanuatu.com.vu](mailto:pkf@vanuatu.com.vu)  
 Website: [www.pkfvanuatu.com.vu](http://www.pkfvanuatu.com.vu)

## Total Arrivals Comparison from January 2009 to January 2010



% -4.5

**Hertz**  
**Now open in Vanuatu!**  
 Rue D'Artois, Nambatu, Port Villa



For reservations call 22468 or 29677

*Source: Airports Vanuatu. Data compiled by Vanuatu Hotels.*

**PKF Vanuatu**

- Chartered Accountants & Business Advisers
- Immigration & Investment
- Business Accounting
- Audit & Assurance
- Company Formation & Insurance
- International Tax & Estate Planning
- Corporate Reconstruction & Insolvency

Tel: (678) 22159 Fax: (678) 22276  
 Email: [pkf@vanuatu.com.vu](mailto:pkf@vanuatu.com.vu)  
 Website: [www.pkfvanuatu.com.vu](http://www.pkfvanuatu.com.vu)